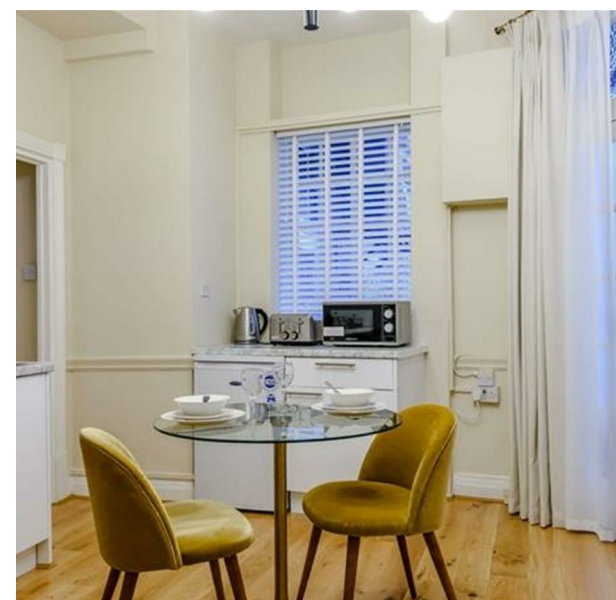
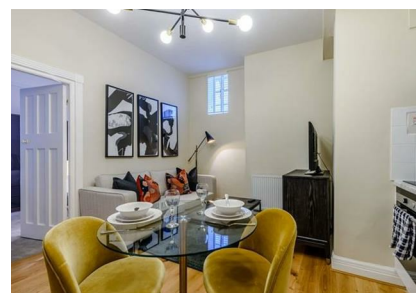


Flat 20 Strathmore Court, Park Road, London, Greater London, NW8 7HY  
£600 Per Week

**COMPLETION**  
SALES & LETTINGS



Flat 20 Strathmore Court, Park Road, London, Greater London, NW8 7HY

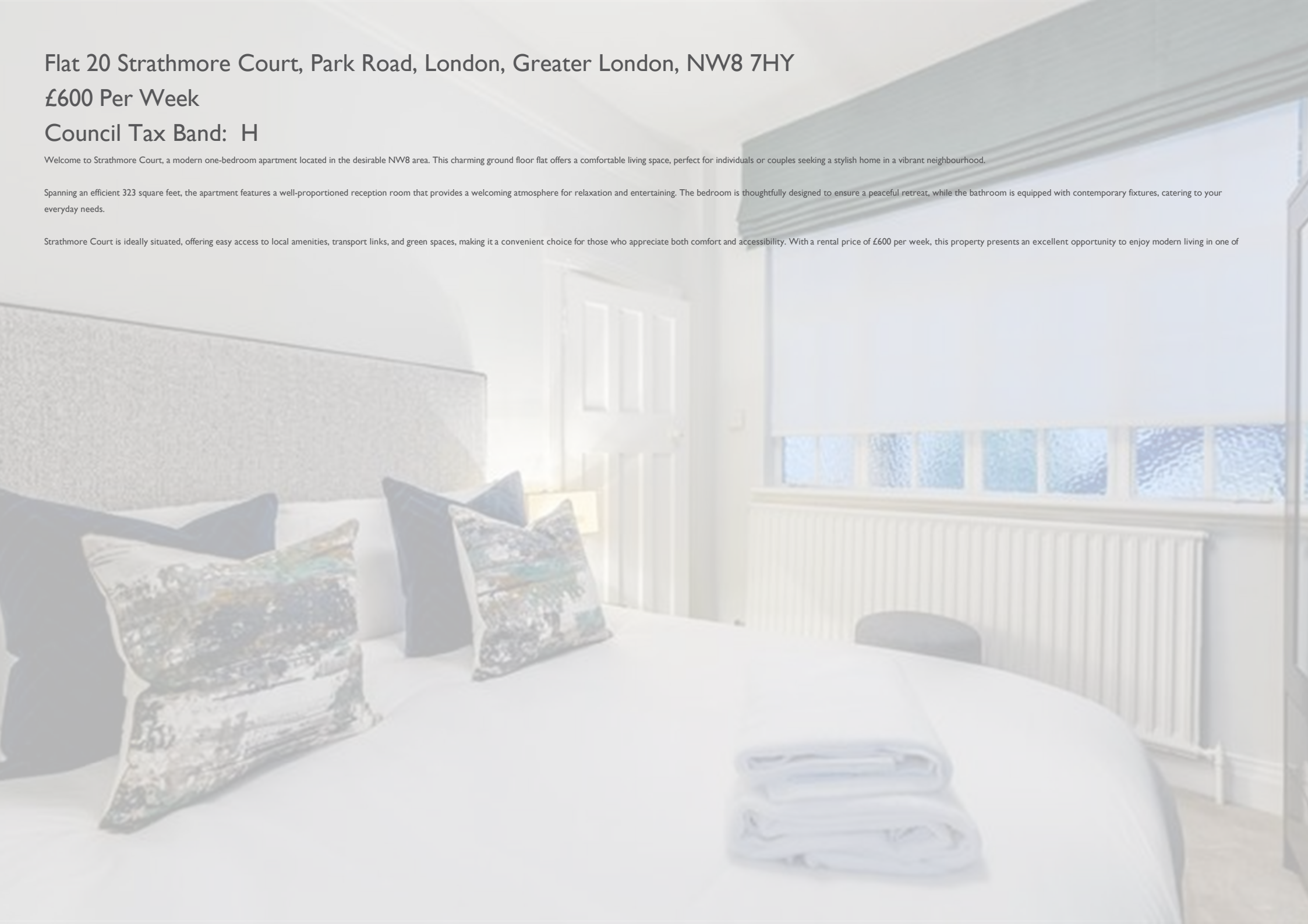
£600 Per Week

Council Tax Band: H

Welcome to Strathmore Court, a modern one-bedroom apartment located in the desirable NW8 area. This charming ground floor flat offers a comfortable living space, perfect for individuals or couples seeking a stylish home in a vibrant neighbourhood.

Spanning an efficient 323 square feet, the apartment features a well-proportioned reception room that provides a welcoming atmosphere for relaxation and entertaining. The bedroom is thoughtfully designed to ensure a peaceful retreat, while the bathroom is equipped with contemporary fixtures, catering to your everyday needs.

Strathmore Court is ideally situated, offering easy access to local amenities, transport links, and green spaces, making it a convenient choice for those who appreciate both comfort and accessibility. With a rental price of £600 per week, this property presents an excellent opportunity to enjoy modern living in one of













337 Forest Road  
London  
E17 5JR  
02085277007  
enquiries@completion.co.uk  
completion.co.uk

